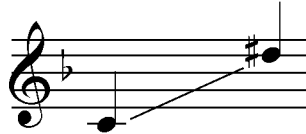


EVERY DAY A NEW AMEN

VOCAL MED. w/ SATB/PIANO SCORE
 SOLO RANGE: C4 to D#5.
 DIFFICULTY LEVEL: MODERATE
 Rev. 2-6-11



Lyrics by Steve Schalchlin
 Music by Steve Schalchlin & Mark Janas
 Arranged by S. Schalchlin & M. Janas

$\text{♩} = 80$

Bb(sus2)/D Bb/D Dm G C(sus4) C

The

6 **Genders may be changed.*

Cath-o - lic girl* - said, "Let's do Ka - ra - o - ke." - She'd found me one night - in a bar.

Bb/F F Bb/F F Bb/D C

She said she loved sing - ing in school with the nuns - but the

Bb/F F Bb/F F Bb/F F

one thing she ha - ted by far - was hav - ing to learn - e - v'ry day

Bb(sus2) Bb C7(sus4) C7 Dm/C C Dm C/D

EVERY DAY A NEW AMEN

15

an a - men 'cause that mus - ty old word_ was a bore. Through

Dm C/D B \flat (sus2) B \flat /F F

18

ver - sions and ver - sions of new var - i - a - tions, they'd turned a prayer in - to a chore.

B \flat /F F B \flat /F F B \flat (sus2)

21

Sung as if bored/annoyed.

E - v'ry_ day_ a new a - men. E - v'ry_

C(sus4) B \flat (sus2) B \flat F(sus4) F

25

day_ a new a - men. Yes, with each new_ bles - sed day_ came a new a -

B \flat (sus2)/D B \flat /D F/A Fmaj7/A Dm C/D C/B \flat B \flat