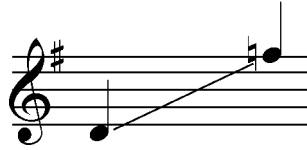


EVERY DAY A NEW AMEN

VOCAL HIGH w/ SATB/PIANO SCORE
 SOLO RANGE: D4 to F5.
 DIFFICULTY LEVEL: MODERATE
 Rev. 2-6-11

Lyrics by Steve Schalchlin
 Music by Steve Schalchlin & Mark Janas
 Arranged by S. Schalchlin & M. Janas



♩ = 80 Gently

8 ♩ = 80 Gently

C(sus2)/E C/E Em A D(sus4) D The

6 *Genders may be changed.

8 Cath-o - lic girl* - said, - "Let's do Ka - ra - o - ke." - She'd found me one night - in a bar.

C/G G C/G G C/E D

9 She said she loved sing - ing in school with the nuns - but the

C/G G C/G G C/G G

12 one thing she ha - ted by far - was hav - ing to learn - e - v'ry day

C(sus2) C D7(sus4) D7 Em/D D Em D/E

EVERY DAY A NEW AMEN

15

an a - men 'cause that mus - ty old word_ was a bore. Through

Em D/E C(sus2) C/G G

18

ver - sions and ver - sions of new var - i - a - tions, they'd turned a prayer in - to a chore.

C/G G C/G G C(sus2)

21

Sung as if bored/annoyed.

E - v'ry_ day_ a new a - men. E - v'ry_

D(sus4) D C(sus2) C G(sus4) G

25

day_ a new a - men. Yes, with each new_ bles - sed day_ came a new a -

C(sus2)/E C/E G/B Gmaj7/B Em D/E D/C C