

Be Still and Know

High Voice in F

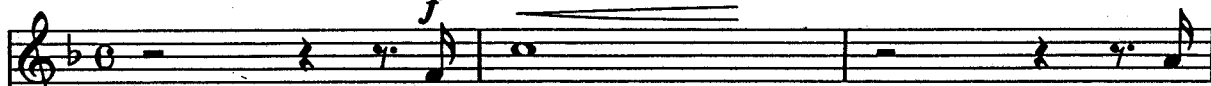


Minna Louise Martrit

Theron Wolcott Hart

Maestoso ma non troppo

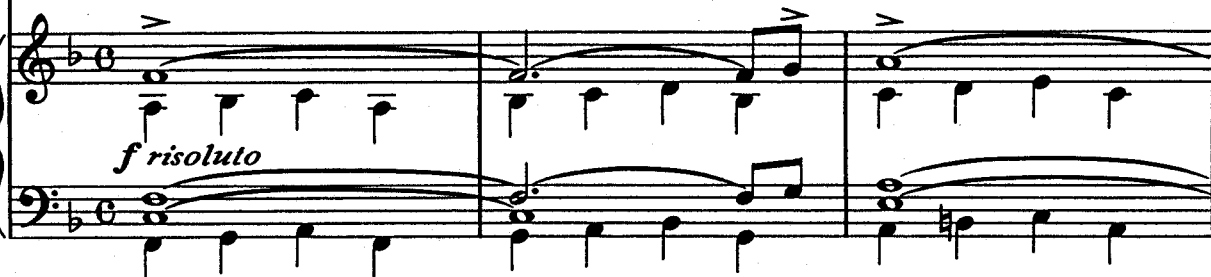
VOICE



Re - joice!

Re -

PIANO
or
ORGAN



f risoluto

joice!

God is not in the earth - quake,



ff

ff

rit.

wind,

or

fire;



mf rit.

www.WatchFireMusic.com -- Published Under License from Publisher

Notice: Purchasers of this musical file are entitled to use 2 copies for their personal enjoyment and musical fulfillment.

Any other duplication, adaptation, arranging and/or transmission of this copyrighted music requires written consent of the copyright owners.

Unauthorized uses are infringements of the copyright laws of the United States and other countries and may be subject the user to civil and/or criminal penalties.

Copyright © MCMLXII by Carl Fischer, Inc., New York
International Copyright Secured

p poco andante

But in the still small voice,

p a tempo

Detailed description: This system contains the first two staves of music. The top staff is a vocal line in G major (one flat) with a tempo marking of *p poco andante*. The lyrics are "But in the still small voice,". The bottom two staves are piano accompaniment. The piano part begins with a *p a tempo* marking. The music features a mix of eighth and quarter notes, with some chords and a melodic line in the right hand.

Detailed description: This system shows the piano accompaniment for the second system. It consists of two staves. The right hand plays a series of chords and moving lines, while the left hand provides a steady accompaniment with some melodic elements. The music is in G major and continues the *p a tempo* tempo.

mp tranquillo

When sin dis-cour-age-ment or fear Would cause us dis-cord, or a

mp

Ped.

Detailed description: This system contains the third and fourth staves of music. The top staff is a vocal line with a tempo marking of *mp tranquillo*. The lyrics are "When sin dis-cour-age-ment or fear Would cause us dis-cord, or a". The bottom two staves are piano accompaniment, starting with an *mp* marking. A "Ped." (pedal) instruction is placed below the first two staves. The piano part features a mix of chords and moving lines, with some melodic elements in the right hand.

tear. Be still, and know that God is near; His

p

Detailed description: This system contains the fifth and sixth staves of music. The top staff is a vocal line with a tempo marking of *p*. The lyrics are "tear. Be still, and know that God is near; His". The bottom two staves are piano accompaniment, starting with a *p* marking. The piano part features a mix of chords and moving lines, with some melodic elements in the right hand.